



جهاز التخطيط والإحصاء
Planning and Statistics Authority
دولة قطر - State of Qatar



Regional Workshop on the Changing Role of Official Statistics in the State of Qatar: Why Data Culture Matters

21st -22nd September 2022, Doha, Qatar
Pullman Hotel, Al Thuraya Ballroom - West Bay

ورشة العمل الإقليمية حول الدور المتغير للإحصاءات الرسمية في دولة قطر: ثقافة البيانات مهمة

٢٢-٢١ سبتمبر ٢٠٢٢، الدوحة، قطر
فندق بولمان الدوحة، قاعة الثريا - الخليج الغربي



Evidence-based Decision Making

Economic Research & Statistics
IsDB Institute

Abu Camara

Outline

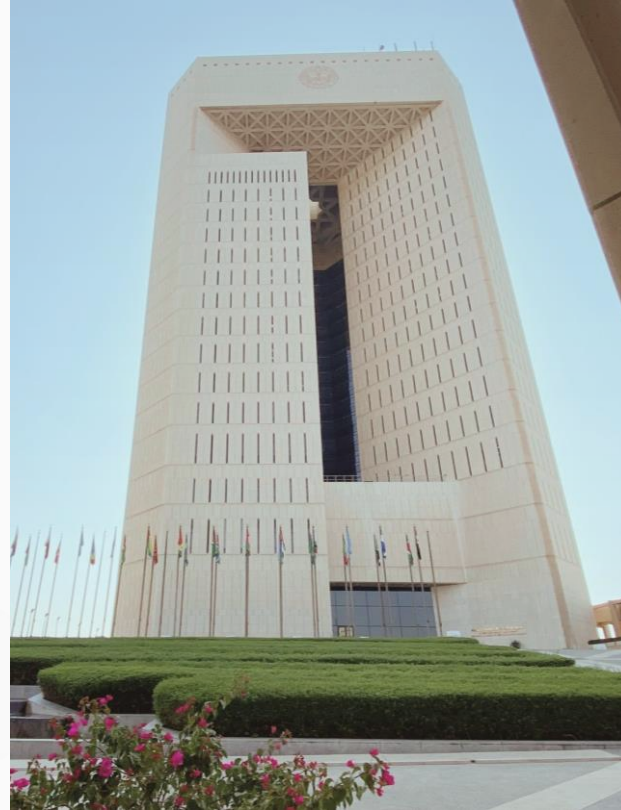
- About IsDB Group
- Unique Model of South-South Cooperation
- Trends in IsDB Group Financing
- Targeted Intervention
- Data Sources
- Key Challenges
- Global Reporting
- Concluding Remarks



About IsDB Group

Islamic Development Bank (IsDB) is based in Jeddah, Saudi Arabia, comprising of 57 member countries across four continents.

It is a Multilateral Development Bank (MDB), working to improve the lives of those we serve by promoting social and economic development in Member countries and Muslim communities in Non-Member Countries in accordance with the principles of Shari'ah.





The Evolution

The institution evolve from a single entity to the following



IsDB - 1975

The Islamic Development Bank is a multilateral development bank that works to improve the lives of people by promoting social and economic development.



IsDBI - 1975

The Islamic Development Bank Institute is responsible for knowledge creation and dissemination in Islamic Economics and Finance.



ICIEC - 1994

The Islamic Corporation for the Insurance of Investment and Export Credit provides investment and export credit insurance for member Countries.



ICD - 1999

The Islamic Corporation for the Development of the Private Sector supports the economic development of its member countries for the private sector projects.



ITFC - 2008

The International Islamic Trade Finance Corporation is a catalyst for trade development among OIC Member Countries.



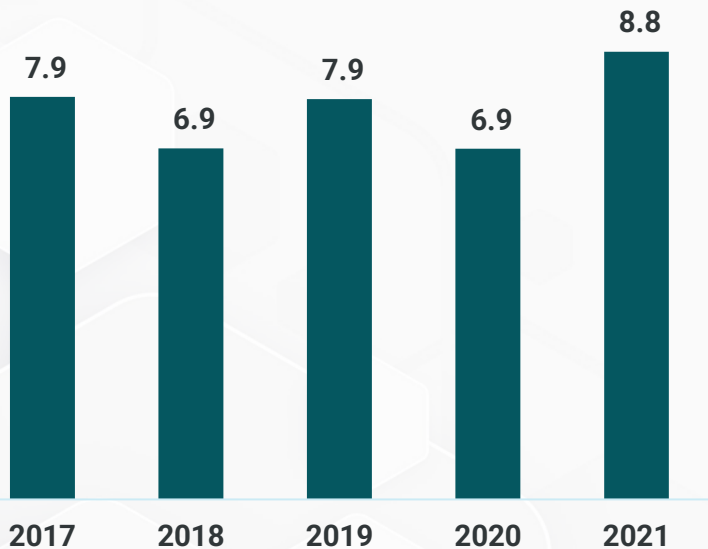
ISFD - 2015

The Islamic Solidarity Fund for Development provides financial support to enhance the productive capacity and sustainable means of income for the poor.

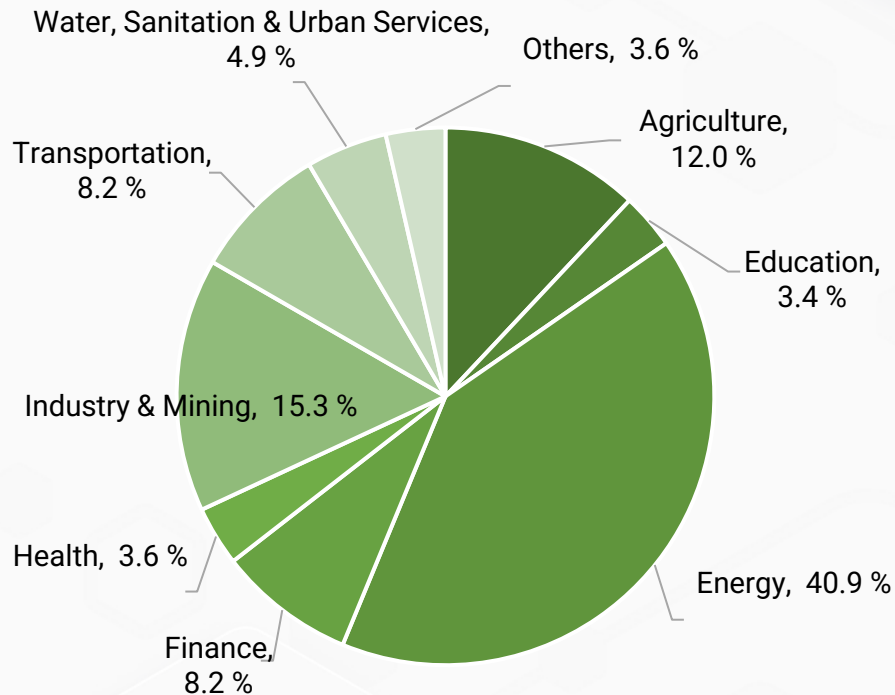


IsDB Group Approvals

Trends in net IsDB Group approvals (USD Billion)



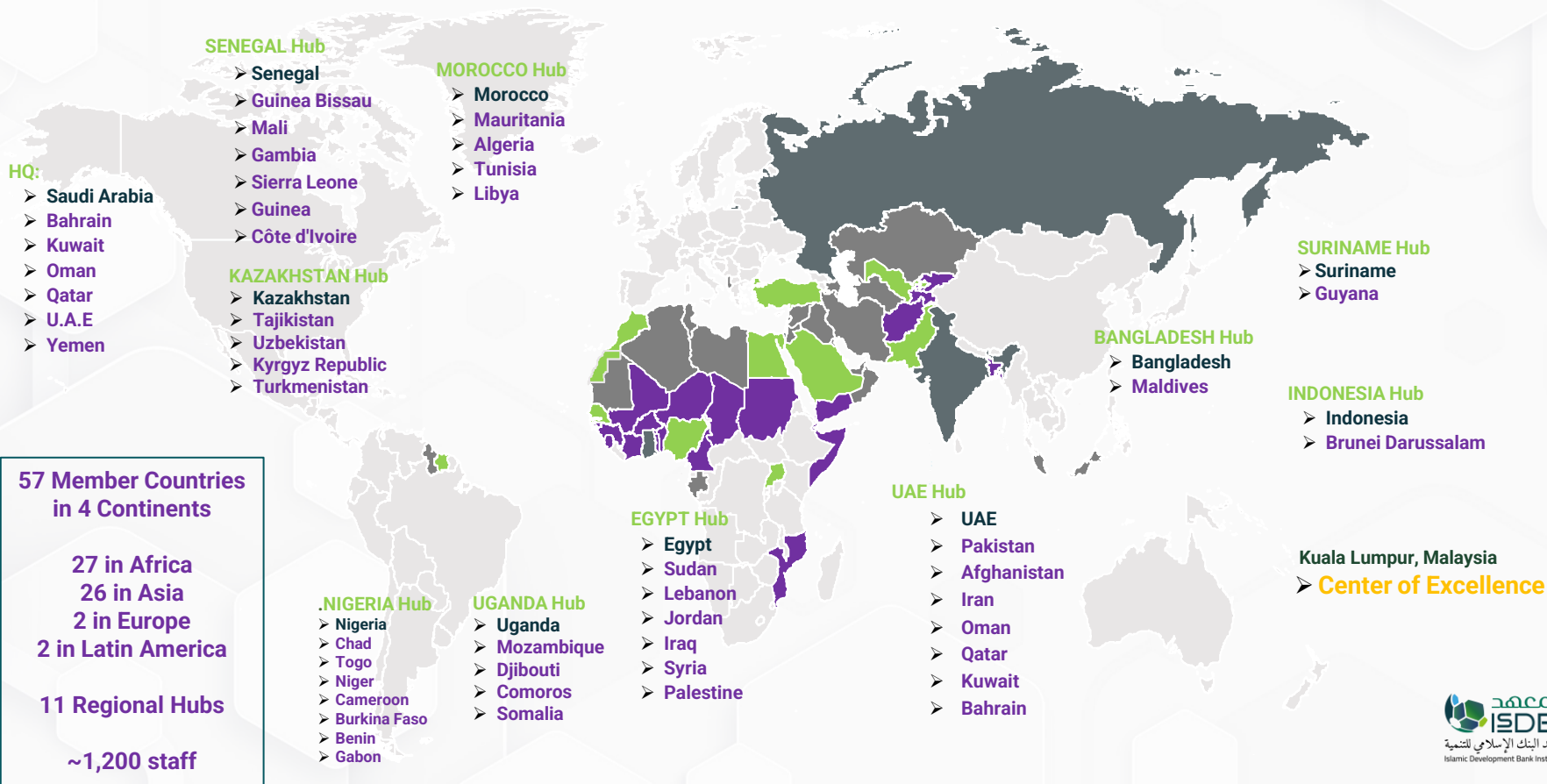
Sector share (%) of Group approvals



Total Group approvals reached USD165.6 Billion as at end of June 2022.



A unique Model of South-South Cooperation



**57 Member Countries
in 4 Continents**

**27 in Africa
26 in Asia
2 in Europe
2 in Latin America**

11 Regional Hubs

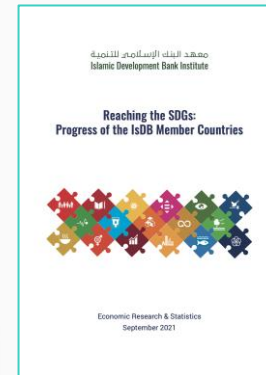
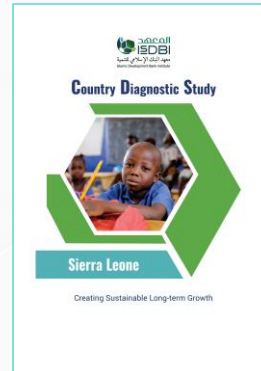
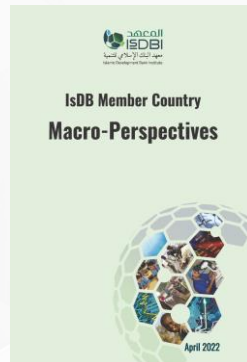
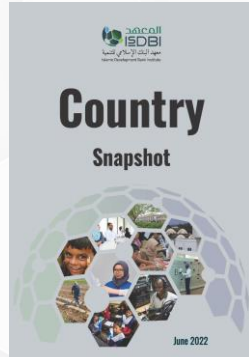
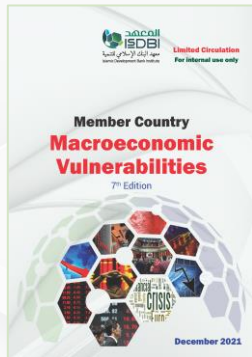
~1,200 staff



Targeted Interventions

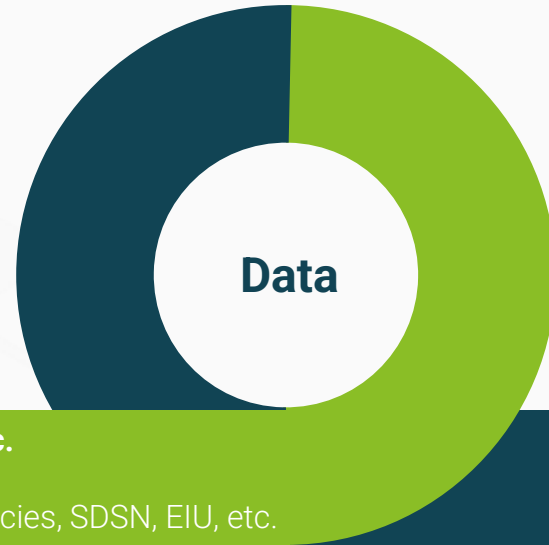
Several statistical reports are periodically published internally for use by management, the operations complex and other users as a guide for:

- (1) Targeting intervention to the most important projects in member countries
- (2) Understanding the portfolio performance in order to make informed decisions and facilitate country level dialogue
- (3) Evaluating the impact of its intervention in member countries
- (4) Monitoring the progress in achieving SDGs





Data Sources



Social, Economy, Environment, etc.
International Sources

NSOs, WB-WDI, IMF-WEO, UN agencies, SDSN, EIU, etc.

IsDB Group Operations

Approvals, Disbursements, Repayments



Key Challenges





Partnering for impact



(i) Technical research, (ii) Building country capacity & (iii) Knowledge sharing and exchange.
Working in common member countries on: - National Accounts, - Statistical Business Register (SBR), - Input-Output (I/O) tables, - Global Value Chain (GVC) analysis



In Senegal

- Strengthened institutional capacity to use non-traditional data sources (e.g., Earth observation data using ARDC) to understand deforestation, insights into water quality, identify the characteristics of areas being used for agricultural activity, etc.
- Transferred satellite data production and analytical capacity
- Reduce decision time from months to days when ARDC and Earth observation (EO) are used agricultural surveys



In Togo

Support to improve environmental data for monitoring and achieving the Sustainable Development Goals.

Collaborate in joint statistical activities to support strengthening the statistical capacity of member countries in Western Asia



IsDBI–Oxford Poverty and Human Development Initiative(OPHI) prepare series of Briefs which explore different dimensions related to multidimensional poverty in IsDB Member Countries using data from the global Multidimensional Poverty Index.



Global Reporting





Concluding Remarks

IsDB Group makes use of data produced by national statistical authorities as well as data from recognized international sources to inform its decisions.

It is therefore imperative to strengthen the capacity of national statistical offices and other data producers in the National Statistical Systems to make available the required data to monitor and report on the progress of national development objectives and global initiatives such as the SDGs.

New data sources, tools and methods can help improve the timeliness, coverage, and quality of development data through collaboration, partnerships and knowledge sharing.

Thank you
Merci

شكرا